

January 12, 2010

# Demographic Projections for North Central Texas

**Tim Barbee**

**North Central Texas Council of Governments**



*North Central Texas 2040 Demographic Forecast*

*January 12, 2010*

# Introduction

- **High level**
- **Overview of Process**
- **Actual forecast will be release on January 28 after Executive Board Action**



January 12, 2010

# NCTCOG 2030 Demographic Forecast

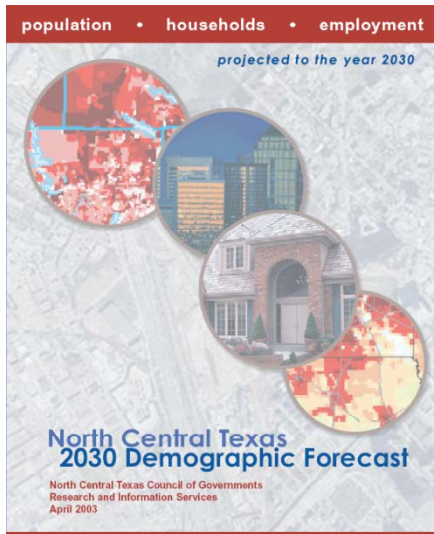
Approved by Executive Board, April 2003

Household Population and Employment Projections

2000 – 2030 in 5 year increments

The current official NCTCOG Demographic Forecast

Mobility 2030 Official Base Case



The NCTCOG Demographic Forecast is developed to provide a uniform empirical base of intra-regional infrastructure planning and resource allocations.



North Central Texas 2040 Demographic Forecast

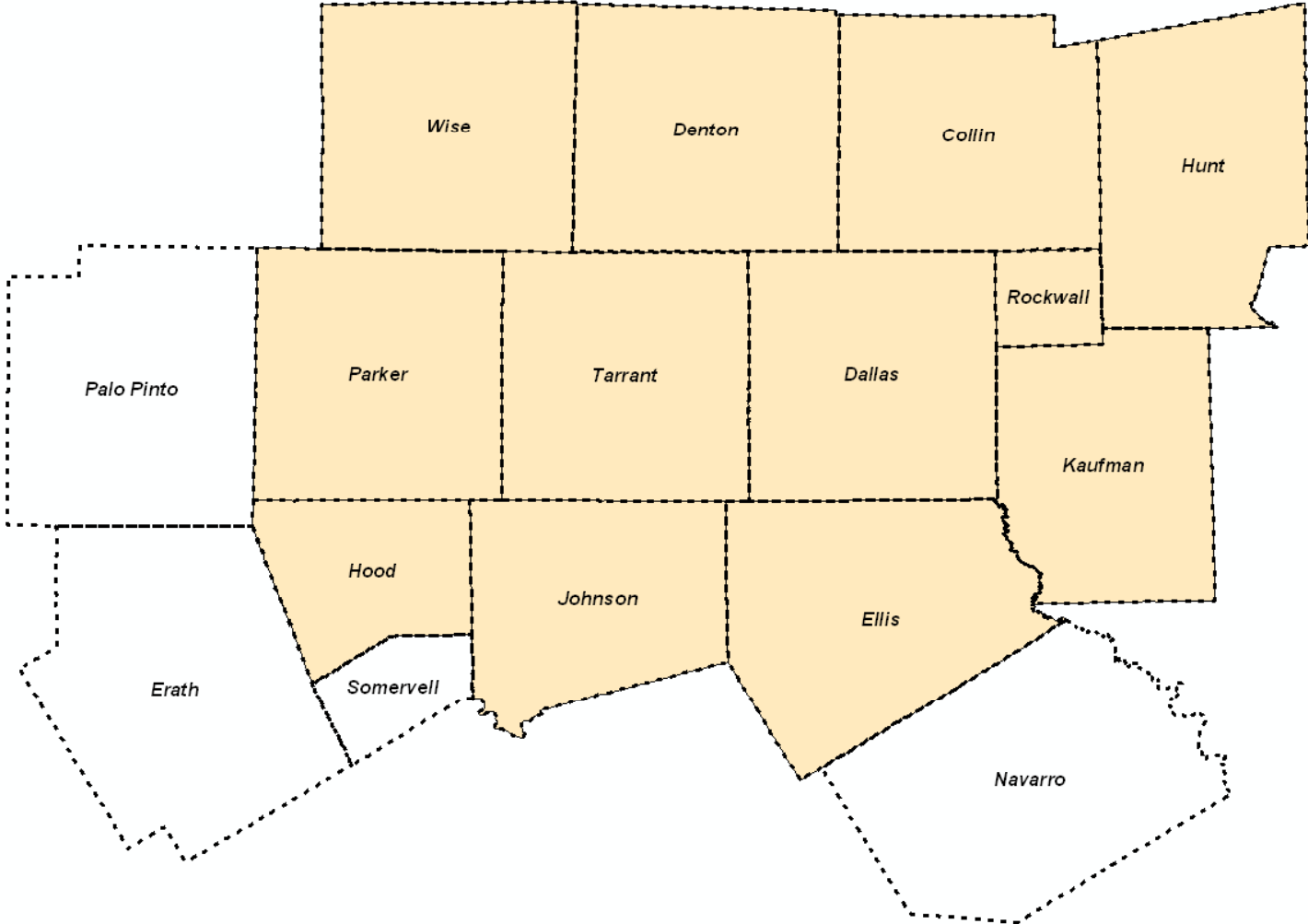
January 12, 2010

# Current Forecasting Efforts

- **Six years since last official forecast released**
- **More data**
- **Increased geographic coverage**
- **Substantial participation from local jurisdictions**
- **Result – new forecast that replaces previous one**



# Coverage



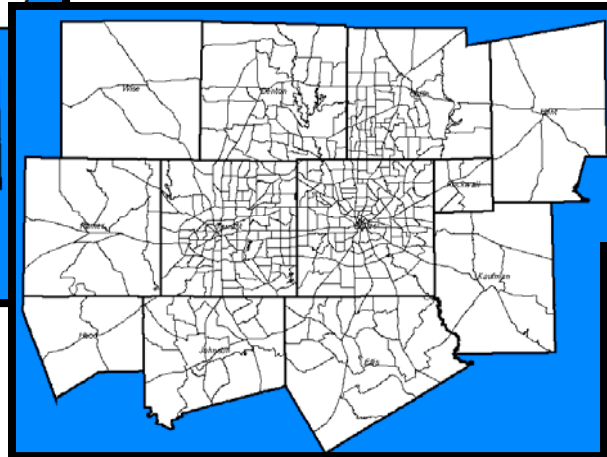
January 12, 2010

# Disaggregation Process

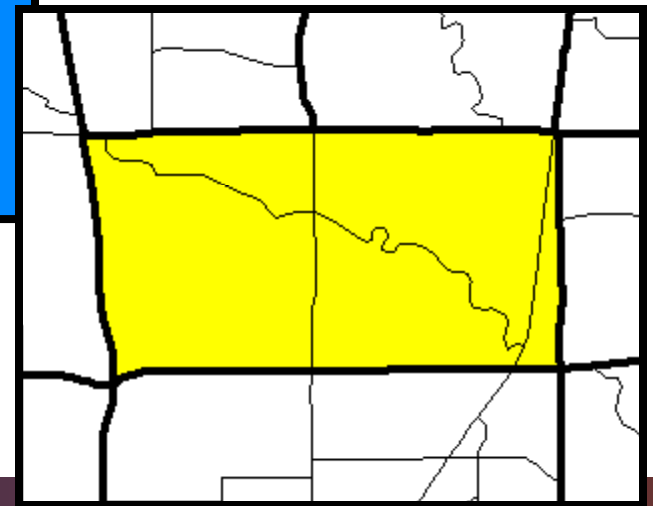
12 County Regional Control Totals



2010 Projections  
Modeled to 777  
Forecast Districts



District Projections  
Disaggregated to 6672  
Traffic Survey Zones



NOTE: TSZ's are an aggregation of census blocks

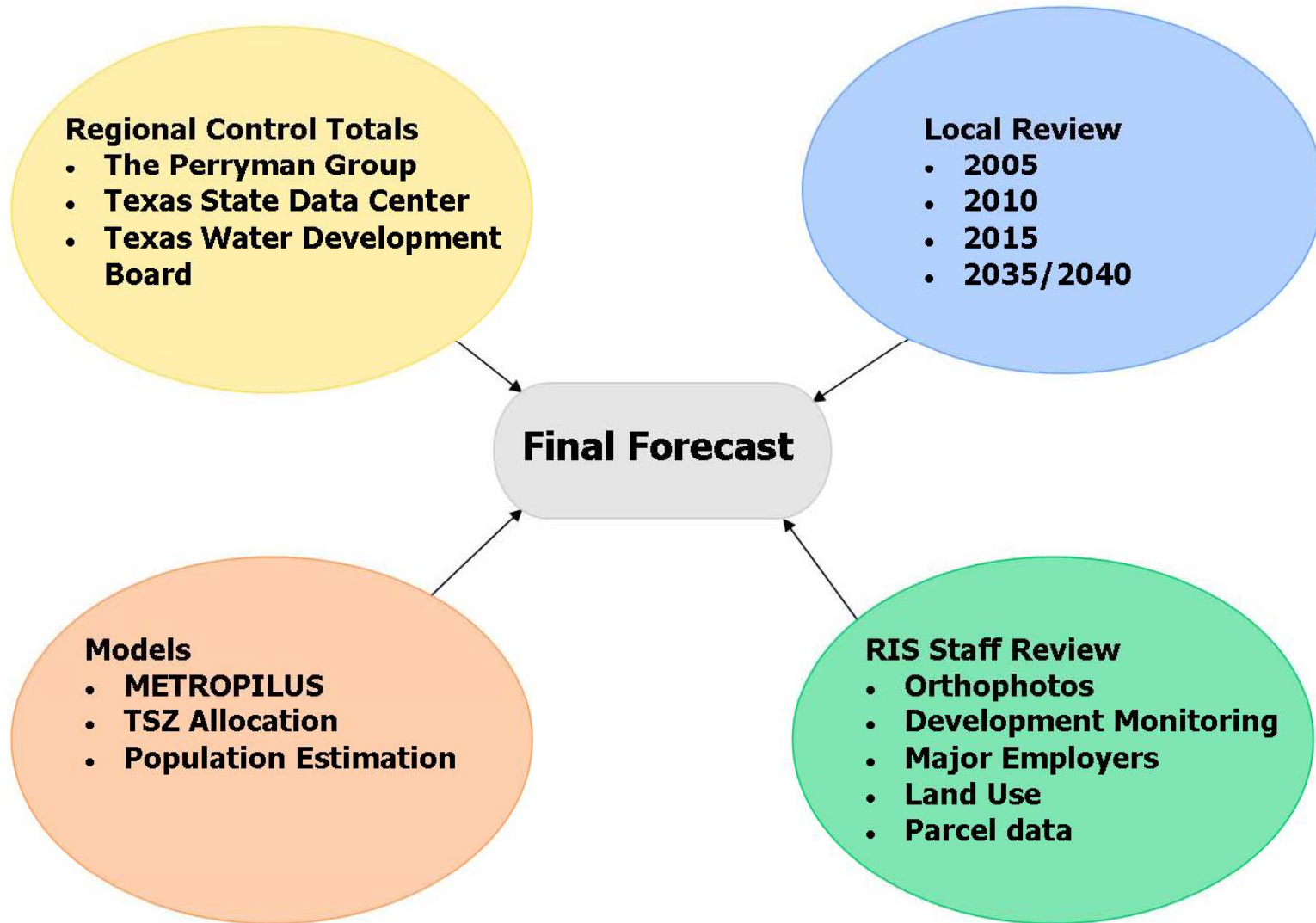


# 2040 Forecast

## Basic Principle of the Current NCTCOG Urban Activity Model



# Process



January 12, 2010

# Regional Control Totals

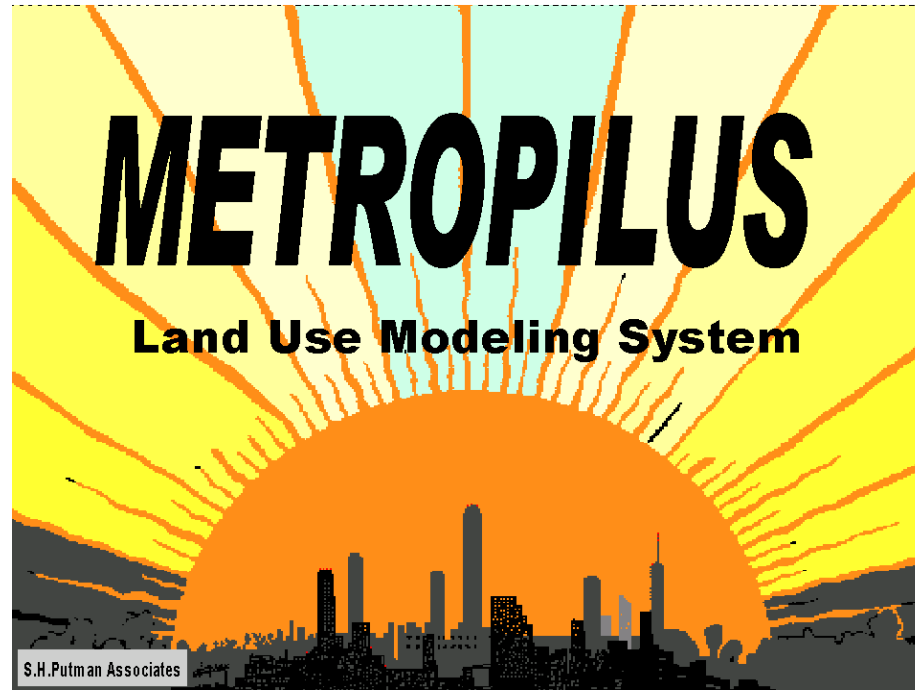
- **The Perryman Group**
  - Produce population and employment forecasts, as requested
- **Texas State Data Center**
  - Produce population forecasts for state and counties, about every 2 years
- **Texas Water Development Board**
  - Produce population forecasts for counties, cities, and regions, about every 5 year

*“Regional” refers to an area including Collin, Dallas, Denton, Ellis, Hood, Hunt, Johnson, Kaufman, Parker, Rockwall, Tarrant, and Wise Counties*



January 12, 2010

# 2040 Forecast



## METROPILUS: DRAM/EMPAL

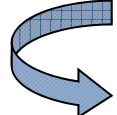

Set of spatial interaction models approved by Federal transportation and environmental agencies for intra-regional population and employment forecasts



# Review Process

-  NCTCOG creates and reviews initial datasets (2000, 2005)
-  Local governments review (2005)

## *Model Runs*

-  NCTCOG reviews
  -  Local governments review
- } (2010, 2015)

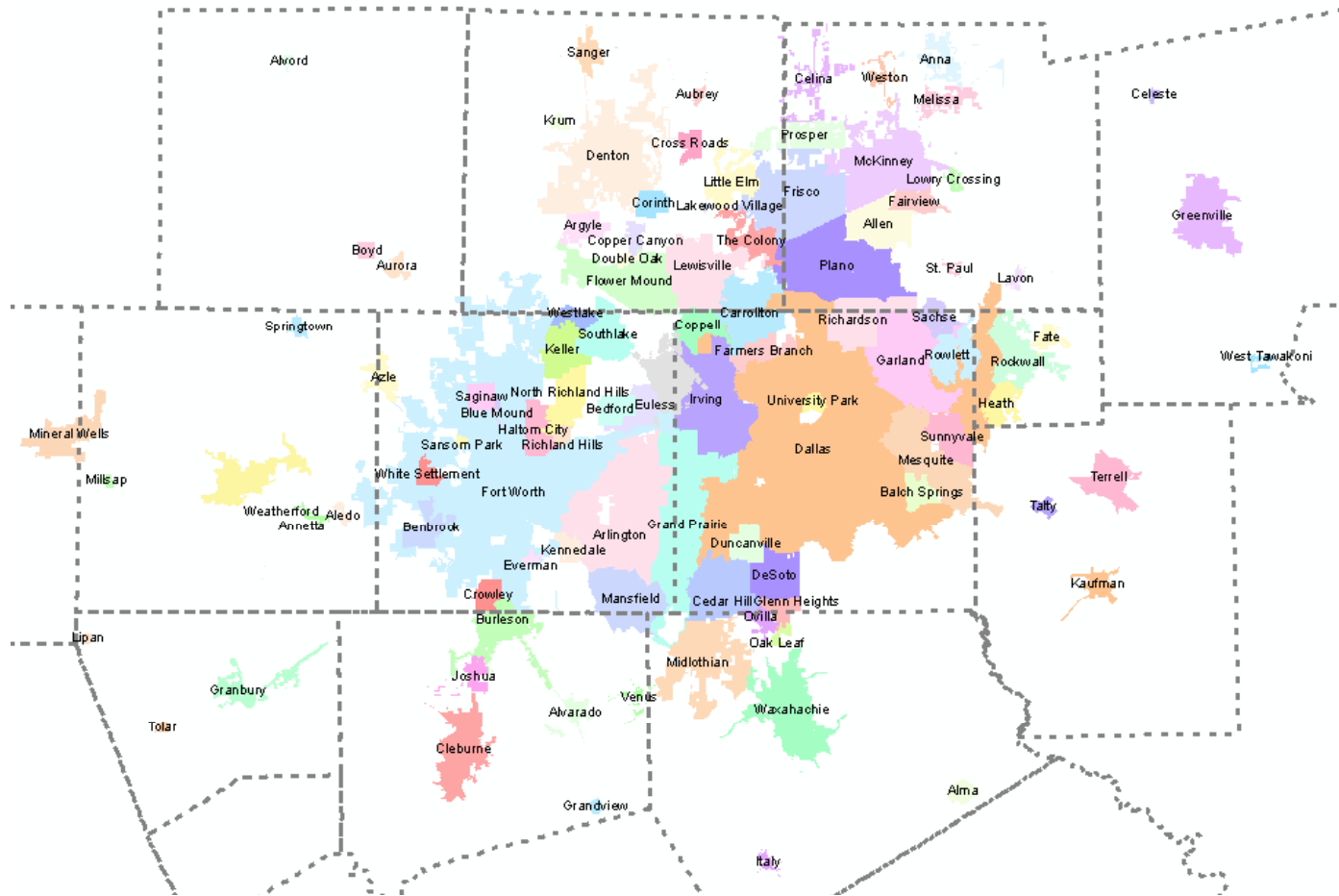
## *Model Runs*

-  NCTCOG reviews (2020 – 2040)
-  Local governments review (2035, 2040)
-  NCTCOG finalizes forecasts to 2040
-  Executive Board approves final forecasts



January 12, 2010

# Local Review Participants



*The map shows cities that downloaded 2035 and 2040 data for final review. In addition to these cities and DFW Airport, NTTA and Tarrant Regional Water District received the data for review.*



January 12, 2010

# Local Review Participation

	Review Period			
	2005	2010	2015	2035/2040
Number of Participating Cities and Counties	67	105	63	64
Percentage of the 12-County Population Represented by Cities and Counties	83%	90%	79%	77%

*The 12-County area includes Collin, Dallas, Denton, Ellis, Hood, Hunt, Johnson, Kaufman, Parker, Rockwall, Tarrant, and Wise Counties*

*In addition to cities and counties, DFW Airport, NTTA, and Tarrant Regional Water District also participated in these reviews.*



January 12, 2010

# Staff Review – Broad Perspective



- Development monitoring
  - existing
  - under construction
  - announced/conceptual
- Major employers
- Land use
  - current use
  - vacant land
  - undevelopable land
- Orthophotographs
  - development changes
- City input
  - plans
  - neighborhoods



January 12, 2010

# Questions?

**Tim Barbee**

**817-695-9158**

**tbarbee@nctcog.org**

**Donna Coggeshall**

**817-695-9168**

**dcoggeshall@nctcog.org**

**[www.nctcog.org](http://www.nctcog.org)**

**[www.dfwmaps.com](http://www.dfwmaps.com)**

